

Professional High Pressure Cleaner Dynajet 350th and Dynajet 150^t



Dynajet 350th and 150^t Compact, powerful and well-thought out right down to the smallest detail.

Ideal for cleaning and refurbishing professionals and anyone who needs the greatest cleaning performance from the combination of water pressure, water output and optimum water temperature. These professional units work completely independently of electric current.

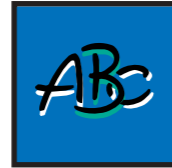
PM Putzmeister
Aqua Pressure System

Dynajet 350th and Dynajet 150^t – from professionals for professionals



2

General



The Dynajet 350th and Dynajet 150^t are the new powerful high pressure cleaners for professional operation.

Compared to traditional units, the Dynajet 350th attains the "third dimension" of cleaning performance. Because along with water pressure and water output, it also has a very high water temperature which makes optimum cleaning the result.

The inside is tidy and well-arranged. For example, also the space for tools and accessories below the lockable hoods.



4

With up to 350 bar (Dynajet 150^t 150 bar) the water shoots out of the spray gun that is supplied by a 300 l water tank. This is concealed, space-savings, in the chassis. This output is more than sufficient for testing and small jobs.

Or you can use the tank as a buffer for the "Non-Stop-Operation".

Lots of important details show you just how well the Dynajet high pressure cleaner is suitable for the field.

A fully automatic control system monitors for example all functions and switches off if required. This also goes for the high performance burner (diesel oil) of the Dynajet 350th with 12 V control and a flame monitor.

Maintenance and Service



Thanks to the new "TARGA"-concept, machine and operator areas are separated from each other, and individually accessible.

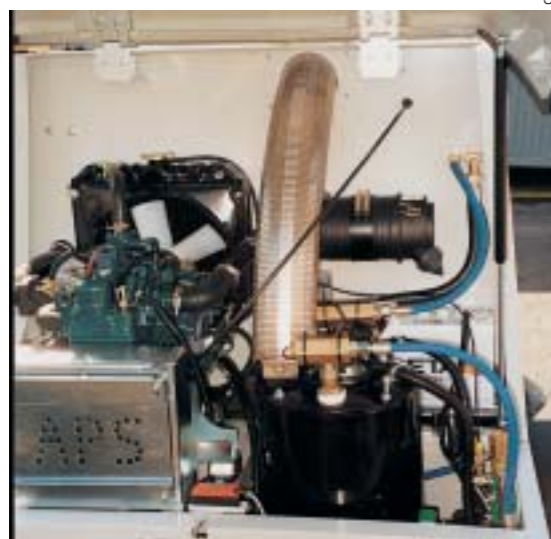
This means that the engine hood remains closed during operation. The machine parts are thereby covered and the operator is protected against rotating parts, hot surfaces and the machine is quiet.

Both of the hoods can be opened extremely wide. All areas are therefore easy to reach – a very good argument for service and operator friendliness.



5

The "TARGA"-concept enables hoods to be widely opened. All areas are very accessible for service and maintenance, and the drive and working sectors are separated.



3

The Dynajet 150^t is the professional unit for excellent pipe and sewer cleaning because high pressure and great water outputs are required here.

Both high pressure cleaners stand out due to their design, the operator friendliness and the many technical highlights. They make light work of daily jobs and are very effective.

The powerful 3-cyl. Diesel has 21 HP, is low in maintenance and always provides sufficient power.

Operation



With just the touch of a button, you start up the powerful 3-cyl. Diesel. And right from the very beginning 21 HP provide the necessary power.

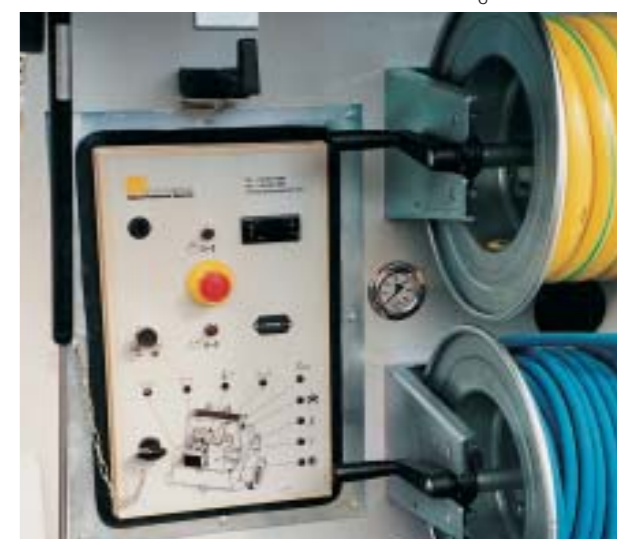
Then you either switch to cold or hot water. The high performance burner of the Dynajet 350th very quickly reaches operating temperature. With the central throttle lever, you can adjust the pressure and water output, and off you go!

Examples of operation of the 350th

- Cleaning
 - Facades and old buildings
 - Construction vehicles and units
 - Formworks and scaffolding
 - Industrial plants
 - Ships and yachts etc.
- Refurbishing facades and balconies
- Removing
 - Plaster and paint
 - Graffiti etc

Examples of operation of the 150^t

- Cleaning
 - Drain pipes and ducts
 - Outlets and lines etc.



6

The control cabinet with integrated control system is the switching centre. Here you find all the important displays and operating elements (e.g. for the Dynajet 350th – the digital temperature display).



7

A filter system reliably cleans the water of external sources and thereby is saving on the high pressure pump.

Dynajet 350th and Dynajet 150^t – the complete data

Dynajet-Model	350 th – hot and cold water	150 ^t – cold water
Working pressure	100 – 350 bar	50 – 150 bar
Delivery output	7 – 20 l/min (420 – 1,200 l/h)	16 – 45 l/min (960 – 2,700 l/h)
Pump	3-piston-pump with ceramic-coated pistons	3-piston-pump with ceramic-coated pistons
Engine (water-cooled)	Kubota Diesel 3 cylinder	Kubota Diesel 3 cylinder
Engine performance	20.9 HP resp. 15.4 kW	20.9 HP resp. 15.4 kW
Torque of engine/pump	3,000/ 1,090 rpm	3,000/ 1,450 rpm
Fuel consumption ø	3.9 l/ h (for 100% load)	3.9 l/ h (for 100% load)
Heating performance of oil burner	115 kW	–
Max. water temperature	150 °C (100°C for 15 l/ min)	Cold water
Consumption of oil burner	7 l/h for 60% load	–
Volume of water tank	300 l	300 l
Volume of fuel tank	70 l	70 l
Weight (empty)	740 kg	710 kg
Dimensions (L x W x H)	248 cm x 172 cm x 172 cm	248 cm x 172 cm x 172 cm
Cat. no	111 480.010	111 480.020

■ Standard equipment Dynajet 350th

25 m water hose ¾", 50 m high pressure hoses ½" on mounted hose rollers, spray gun with 800 mm nozzle pipe and fan jet nozzle, overrun brakes (80/130 km/h), operating instructions

■ Standard equipment Dynajet 150^t

25 m water hose ¾", hydraulic hose roll with hose guide, spray gun with 800 mm nozzle pipe and fan jet nozzle, overrun brakes (80/130 km/h), operating instructions

■ Putzmeister Aqua Pressure System

is the new member of the Putzmeister Group based in Aichtal, near Stuttgart.

Since 1956 Putzmeister is one of the world-wide leading manufacturers of mortar machines, concrete pumps, tunnel machines, industrial pumps and now also of professional high pressure cleaners.

This great union offers the ideal conditions for operation and sales partners all over the world – with regard to competence, investment

■ Optional equipment Dynajet 350th and Dynajet 150^t

High pressure hoses ½"
 25 m 413 998
 50 m 413 999
 75 m 413 997
 Tool box 413 996

Accessories can be found in our special accessories brochure (MM 3244). Ask for your free copy or visit us at our homepage: www.dynajet.de



On request we also offer both versions as mounting module for your transporter or trailer.



security and optimum service in all sectors.

■ Your Putzmeister partner

